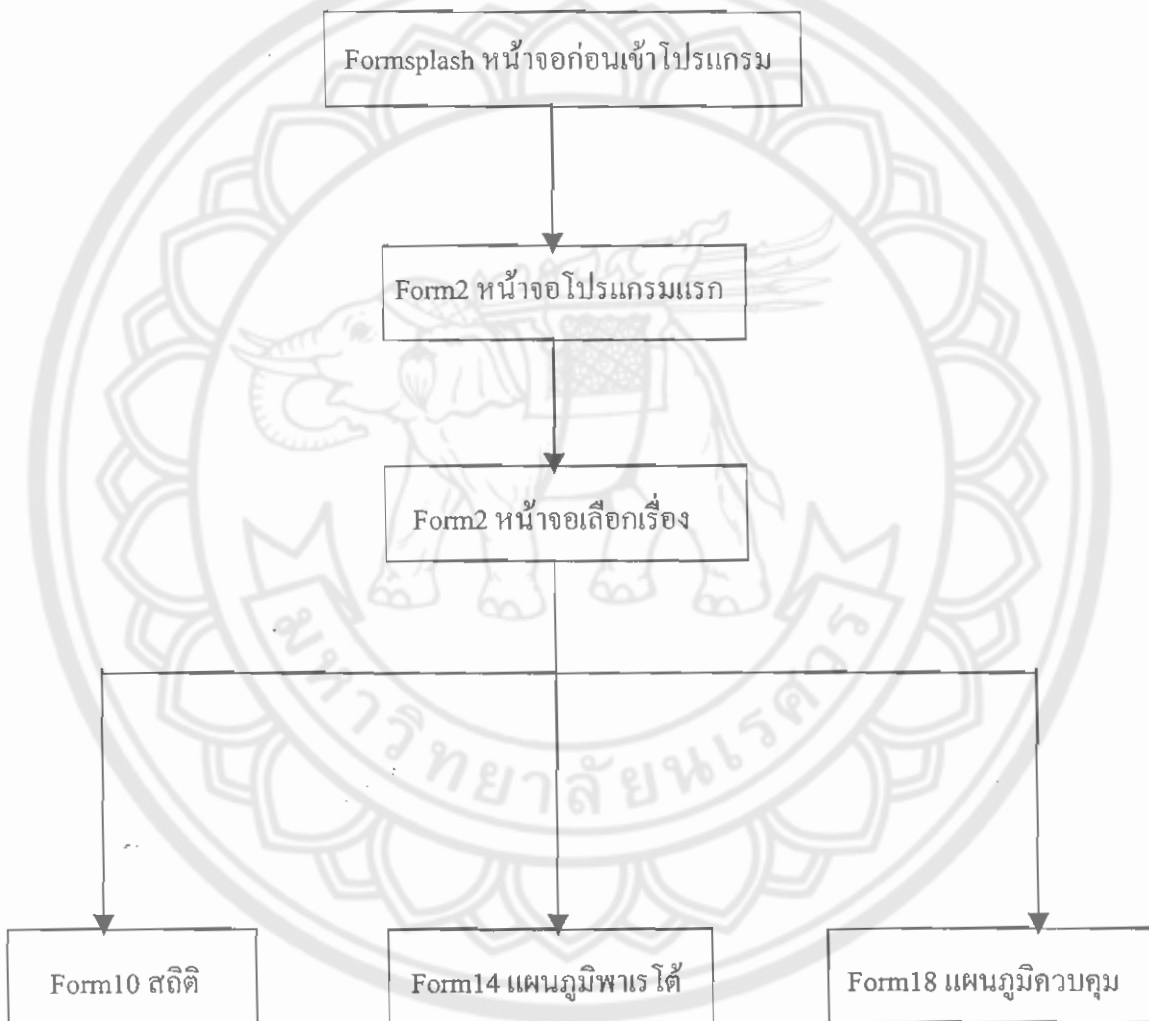


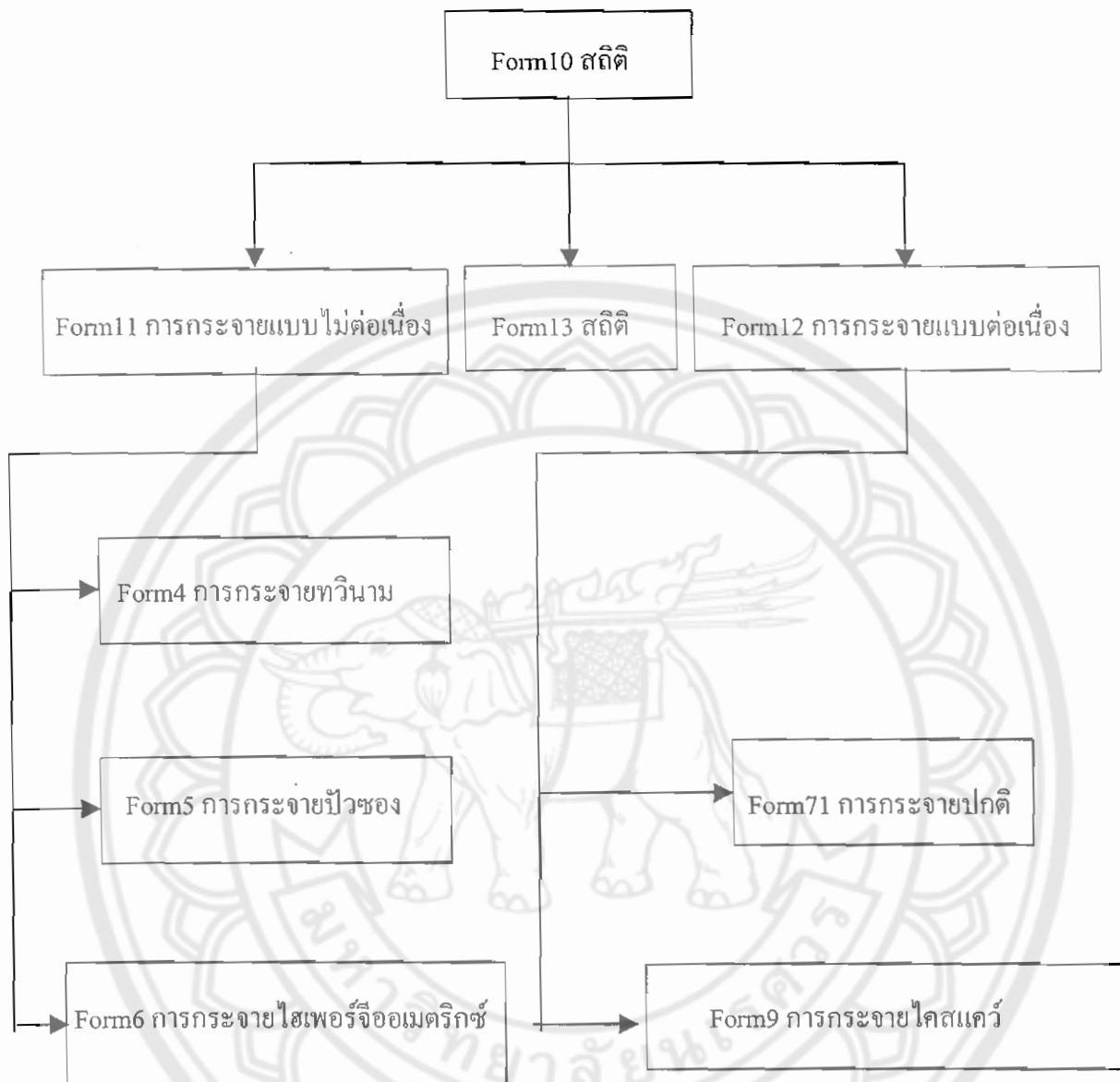


## โครงสร้างของโปรแกรม

การเขียน โปรแกรมด้วย Microsoft Visual Basic นั้นจะประกอบด้วย การเขียนฟอร์มขึ้นมาหลายๆ ฟอร์มแล้วเชื่อมต่อฟอร์มเข้าด้วยกันและภายในฟอร์มในแต่ละฟอร์มก็จะมี Control ซึ่งจะทำหน้าที่ต่างๆ กัน แล้วแต่หน้าที่



รูปที่ 1 โครงสร้างของโปรแกรม



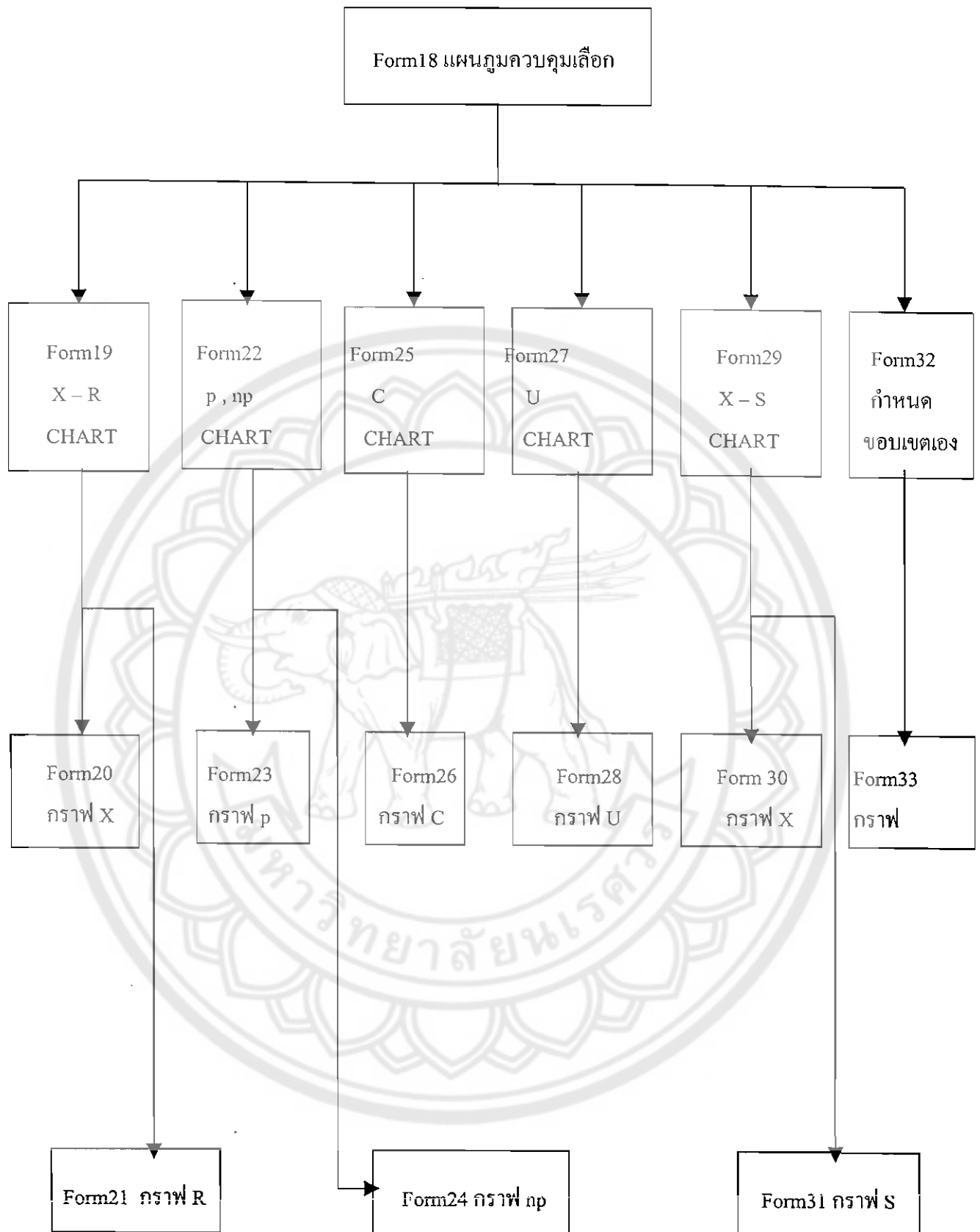
รูปที่ 2 โครงสร้างของสถิติ

Form14 แผนภูมิพารेटโต้

Form15 กราฟแผนภูมิพารेटโต้

รูปที่ 3 โครงสร้างของแผนภูมิพารेटโต้ ( Pareto Diagram )





รูปที่ 4 โครงสร้างของแผนภูมิควบคุม

## คำสั่งโปรแกรม (SOURCE CODE)

### Formsplash

```
Private Sub Timer1_Timer()
```

```
Form2.Show
```

```
Unload frmSplash
```

```
End Sub
```

### Form 1

```
Public explorer As SHDocVw.InternetExplorer
```

```
Private Sub Command1_Click()
```

```
Form10.Show vbModal
```

```
End Sub
```

```
Private Sub Command3_Click()
```

```
Form14.Show vbModal
```

```
End Sub
```

```
Private Sub Command4_Click()
```

```
Form18.Show vbModal
```

```
End Sub
```

```
Private Sub Command6_Click()
```

```
Unload Me
```

```
End Sub
```

```
Private Sub Command7_Click()
```

```
End
```

```
End Sub
```

```
Private Sub mnufileexit_Click()
```

```
End
```

```
End Sub
```

```
Private Sub mnufileexittomainmenu_Click()
```

```
Unload Me
```

```
End Sub
```

```
Private Sub mnuhelpabout_Click()
```

```
Form3.Show vbModal
End Sub
Private Sub mnuhelpcontent_Click()
On Error GoTo error1
Set explorer = New SHDocVw.InternetExplorer
explorer.Visible = True
explorer.Navigate Text1.Text
Exit Sub
error1:
MsgBox "can't open HTML Document", , Err.Description
End SubEnd Sub
```

Form 2

```
Public explorer As SHDocVw.InternetExplorer
Private Sub Command1_Click()
Form1.Show vbModal
End Sub
Private Sub Command2_Click()
End
End Sub
Private Sub mnufileexitprogram_Click()
End
End Sub
Private Sub mnuhelpabout_Click()
Form3.Show vbModal
End Sub
Private Sub mnuhelpcontent_Click()
On Error GoTo error1
Set explorer = New SHDocVw.InternetExplorer
explorer.Visible = True
explorer.Navigate Text1.Text
Exit Sub
error1:
```

MsgBox "can't open HTML Document", , Err.Description

End Sub

### Form 3

Private Sub Command1\_Click()

Unload Me

End Sub

### Form 4

Public explorer As SHDocVw.InternetExplorer

Dim a, b, c, d, e, f, g, h, i, j, k, l, m, n, o, ans, aa, bb, cc, dd, ee, ff, gg, hh, ii, jj, kk, ll, mm, nn, oo, ansans As

Single

Private Sub Command1\_Click()

If Text1.Text = "" Then

MsgBox "ท่านยังไม่ได้กรอกค่า n", vbOKOnly + vbCritical, "TCQC 2001"

GoTo tong:

End If

If Text2.Text = "" Then

MsgBox "ท่านยังไม่ได้กรอกค่า p", vbOKOnly + vbCritical, "TCQC 2001"

GoTo tong:

End If

If Text4.Text = "" Then

MsgBox "ท่านยังไม่ได้กรอกค่า x", vbOKOnly + vbCritical, "TCQC 2001"

GoTo tong:

End If

If Option1.Value = True Then

a = Text1.Text

e = Text2.Text

d = Text4.Text

f = 1 - e

h = 1

For g = 1 To a Step 1

h = h \* g

Next g



```
j = 1
For i = 1 To d Step 1
j = j * i
Next i
k = a - d
m = 1
For l = 1 To k Step 1
m = m * l
Next l
ans = (h / (j * m)) * (e ^ d) * (f ^ k)
n = a * e
o = f * e * a
Text5.Text = Format(ans, "##.####")
Text6.Text = Format(e, "##.####")
Text7.Text = Format(f, "##.####")
Text8.Text = Format(n, "#####.####")
Text9.Text = Format(o, "#####.####")
a = 0
b = 0
c = 0
d = 0
e = 0
f = 0
g = 0
h = 0
i = 0
j = 0
k = 0
l = 0
m = 0
n = 0
o = 0
```

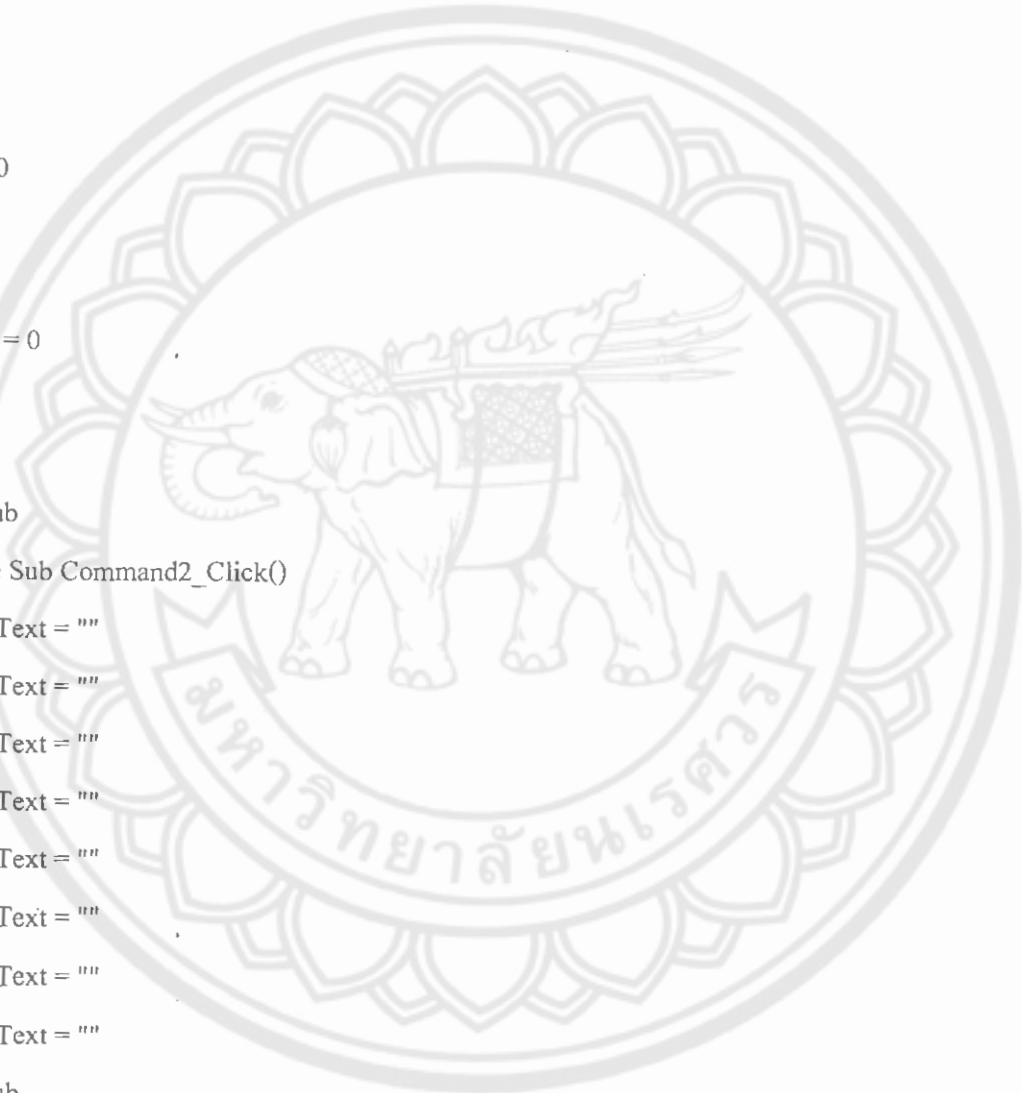


```

ans = 0
Else
aa = Text1.Text
ee = Text2.Text
dd = Text4.Text
For dd = dd To 0 Step -1
ff = 1 - ee
hh = 1
For gg = 1 To aa Step 1
hh = hh * gg
Next gg
jj = 1
For ii = 1 To dd Step 1
jj = jj * ii
Next ii
kk = aa - dd
mm = 1
For ll = 1 To kk Step 1
mm = mm * ll
Next ll
ansans = ansans + (hh / (jj * mm)) * (ee ^ dd) * (ff ^ kk)
nn = aa * ee
oo = ff * ee * aa
Next dd
Text5.Text = Format(ansans, "##.####")
Text6.Text = Format(ee, "##.####")
Text7.Text = Format(ff, "##.####")
Text8.Text = Format(nn, "#####.####")
Text9.Text = Format(oo, "#####.####")
aa = 0
bb = 0
cc = 0

```

```
dd = 0
ee = 0
ff = 0
gg = 0
hh = 0
ii = 0
jj = 0
kk = 0
ll = 0
mm = 0
nn = 0
oo = 0
ansans = 0
End If
tong:
End Sub
Private Sub Command2_Click()
Text1.Text = ""
Text2.Text = ""
Text4.Text = ""
Text5.Text = ""
Text6.Text = ""
Text7.Text = ""
Text8.Text = ""
Text9.Text = ""
End Sub
Private Sub Command3_Click()
Unload Me
End Sub
Private Sub Command4_Click()
End
End Sub
```



```

Private Sub mnuexit_Click()
End
End Sub
Private Sub Option1_Click()
Label4.Caption = "โอกาสที่จะพบของเสีย=X"
End Sub
Private Sub Option2_Click()
Label4.Caption = "โอกาสที่จะพบของเสีย<=X"
End Sub
Private Sub دکم_Click()
On Error GoTo error1
Set explorer = New SHDocVw.InternetExplorer
explorer.Visible = True
explorer.Navigate Text3.Text
Exit Sub
error1:
MsgBox "can't open HTML Document", , Err.Description
End Sub
Private Sub دکاد_Click()
Form3.Show vbModal
End Sub
Private Sub دکاف_Click()
Unload Me
End Sub

```

Form 5

```

Public explorer As SHDocVw.InternetExplorer
Dim a, b, c, d, e, f, g, h, i, j, ans, aa, ee, dd, ff, gg, ii, hh, jj, ansans As Single
Private Sub Command1_Click()
If Text1.Text = "" Then
MsgBox "ท่านยังไม่ได้กรอกค่า n", vbOKOnly + vbCritical, "TCQC 2001"
GoTo tong:
End If

```

```

If Text2.Text = "" Then
MsgBox "ท่านยังไม่ได้กรอกค่า p", vbOKOnly + vbCritical, "TCQC 2001"
GoTo tong:
End If

If Text7.Text = "" Then
MsgBox "ท่านยังไม่ได้กรอกค่า x", vbOKOnly + vbCritical, "TCQC 2001"
GoTo tong:
End If

If Option1.Value = True Then
a = Text1.Text
e = Text2.Text
d = Text7.Text
f = 1 - e
Const g = 2.7182818
i = 1
For h = 1 To d
i = i * h
Next h
j = a * e
ans = ((g ^ (-1 * j)) * (j ^ d)) / i
Text4.Text = Format(e, "##.####")
Text5.Text = Format(f, "##.####")
Text6.Text = Format(ans, "##.####")
Text8.Text = Format(j, "##.####")
Text9.Text = Format(j, "##.####")

a = 0
e = 0
d = 0
f = 0
i = 0
h = 0
j = 0

```

```
ans = 0
Else
aa = Text1.Text
ee = Text2.Text
dd = Text7.Text
For dd = dd To 0 Step -1
```

```
ff = 1 - e
```

```
Const gg = 2.7182818
```

```
ii = 1
```

```
For hh = 1 To dd
```

```
ii = ii * hh
```

```
Next hh
```

```
jj = aa * ee
```

```
ansans = ansans + ((gg ^ (-1 * jj)) * (jj ^ dd)) / ii
```

```
Text4.Text = Format(ee, "##.####")
```

```
Text5.Text = Format(ff, "##.####")
```

```
Text6.Text = Format(ansans, "##.####")
```

```
Text8.Text = Format(jj, "##.####")
```

```
Text9.Text = Format(jj, "##.####")
```

```
Next dd
```

```
aa = 0
```

```
ee = 0
```

```
dd = 0
```

```
ff = 0
```

```
ii = 0
```

```
hh = 0
```

```
jj = 0
```

```
ansans = 0
```

```
End If
```

```
tong:
```

```
End Sub
```

```
Private Sub Command2_Click()
```

```
End
End Sub
Private Sub Command3_Click()
Text1.Text = ""
Text2.Text = ""
Text4.Text = ""
Text5.Text = ""
Text6.Text = ""
Text7.Text = ""
Text8.Text = ""
Text9.Text = ""
End Sub
Private Sub Command4_Click()
Unload Me
End Sub
Private Sub menuback_Click()
Unload Me
End Sub
Private Sub mnuexit_Click()
End
End Sub
Private Sub Option1_Click()
Label7.Caption = "โอกาสที่จะพบของเสีย=X"
End Sub
Private Sub Option2_Click()
Label7.Caption = "โอกาสที่จะพบของเสีย<=X"
End Sub
Private Sub กดหกด_Click()
On Error GoTo error1
Set explorer = New SHDocVw.InternetExplorer
explorer.Visible = True
explorer.Navigate Text3.Text
```

```
Exit Sub
error1:
MsgBox "can't open HTML Document", , Err.Description
End Sub
Private Sub ฟืท_Click()
Form3.Show vbModal
End Sub
```

Form 6

```
Public explorer As SHDocVw.InternetExplorer
Dim a, b, c, d, e, f, g, h, i, j, k, l, m, n, o, p, q, r, s, t, u, v, w, x, y, z, aa, bb, cc, ans, ans1, ans2, aaa As Single
Private Sub Command1_Click()
If Option1.Value = True Then
a = Text1.Text
b = Text2.Text
c = Text3.Text
d = Text4.Text
f = 1
For e = 1 To a
f = f * e
Next e
h = 1
For g = 1 To b
h = h * g
Next g
i = a - b
k = 1
For j = 1 To i
k = k * j
Next j
l = c - a
n = 1
For m = 1 To l
```



```

n = n * m
Next m
o = d - b
q = 1
For p = 1 To o
q = q * p
Next p
r = 1 - o
t = 1
For s = 1 To r
t = t * s
Next s
v = 1
For u = 1 To c
v = v * u
Next u
w = 1
For x = 1 To d
w = w * x
Next x
y = c - d
aa = 1
For z = 1 To y
aa = aa * z
Next z
ans = ((f / (h * k)) * (n / (q * t))) / (v / (w * aa))
bb = d * a / c
cc = bb * (1 - (a / c)) * (y / (c - 1))
Text5.Text = Format(ans, "##.####")
Text6.Text = Format(bb, "##.####")
Text7.Text = Format(cc, "##.####")
Else

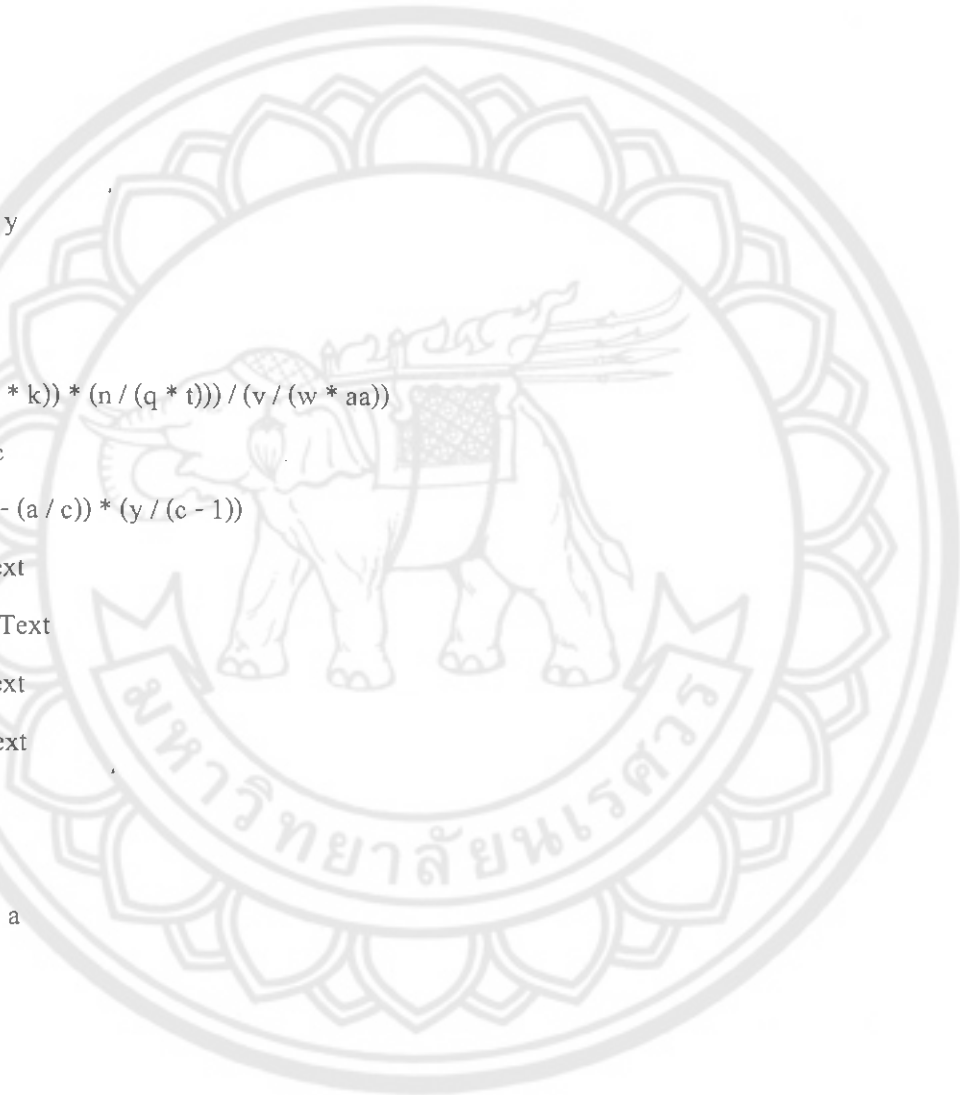
```



```
a = Text1.Text
b = Text2.Text
c = Text3.Text
d = Text4.Text
f = 1
For e = 1 To a
f = f * e
Next e
h = 1
For g = 1 To b
h = h * g
Next g
i = a - b
k = 1
For j = 1 To i
k = k * j
Next j
l = c - a
n = 1
For m = 1 To l
n = n * m
Next m
o = d - b
q = 1
For p = 1 To o
q = q * p
Next p
r = l - o
t = 1
For s = 1 To r
t = t * s
Next s
```



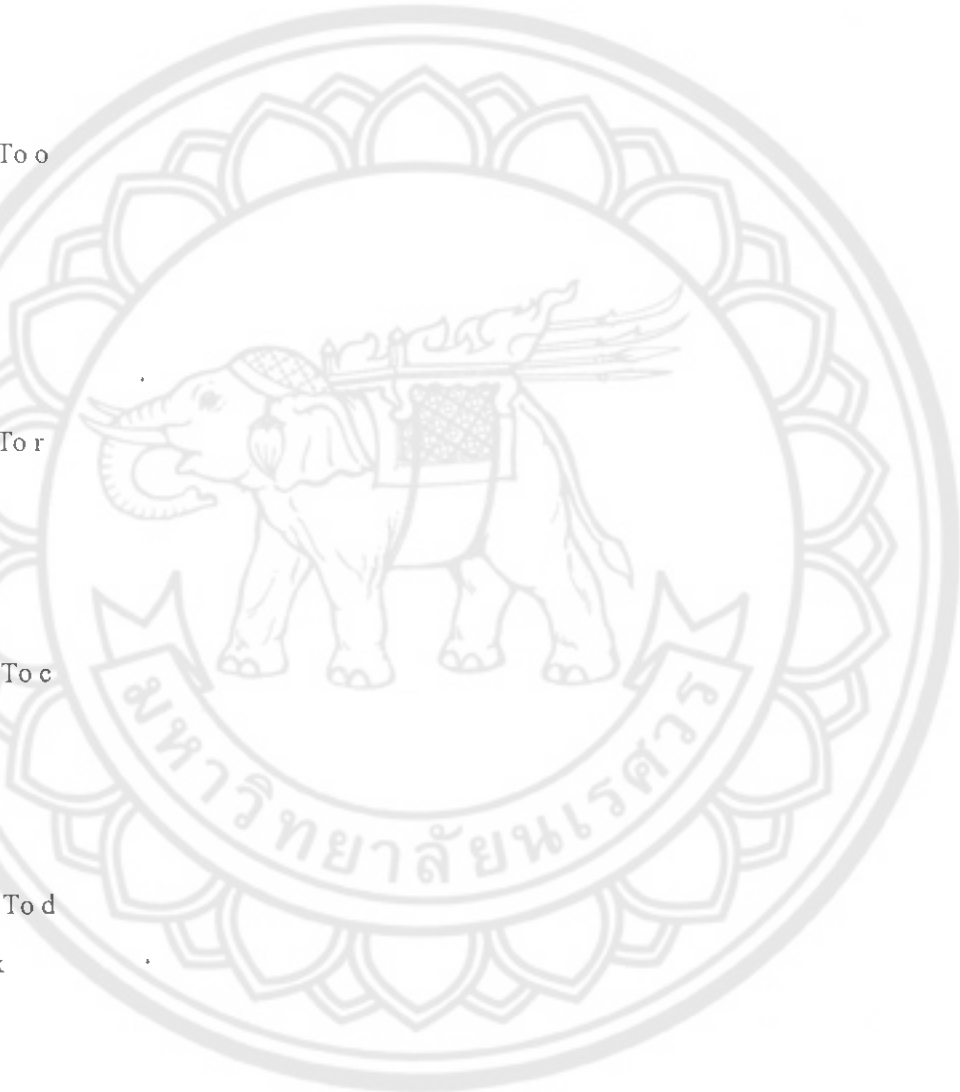
```
v = 1
For u = 1 To c
v = v * u
Next u
w = 1
For x = 1 To d
w = w * x
Next x
y = c - d
aa = 1
For z = 1 To y
aa = aa * z
Next z
ans = ((f / (h * k)) * (n / (q * t))) / (v / (w * aa))
bb = d * a / c
cc = bb * (1 - (a / c)) * (y / (c - 1))
a = Text1.Text
aaa = Text2.Text
c = Text3.Text
d = Text4.Text
b = aaa - 1
f = 1
For e = 1 To a
f = f * e
Next e
h = 1
For g = 1 To b
h = h * g
Next g
i = a - b
k = 1
For j = 1 To i
```



```

k = k * j
Next j
l = c - a
n = 1
For m = 1 To l
n = n * m
Next m
o = d - b
q = 1
For p = 1 To o
q = q * p
Next p
r = l - o
t = 1
For s = 1 To r
t = t * s
Next s
v = 1
For u = 1 To c
v = v * u
Next u
w = 1
For x = 1 To d
w = w * x
Next x
y = c - d
aa = 1
For z = 1 To y
aa = aa * z
Next z
ans1 = ((f / (h * k)) * (n / (q * t))) / (v / (w * aa))
bb = d * a / c

```



```

cc = bb * (1 - (a / c)) * (y ^ (c - 1))
ans2 = ans + ans1
Text5.Text = Format(ans2, "##.####")
Text6.Text = Format(bb, "##.####")
Text7.Text = Format(ans, "##.####")
End If
End Sub
Private Sub Command2_Click()
Text1.Text = ""
Text2.Text = ""
Text3.Text = ""
Text4.Text = ""
Text5.Text = ""
Text6.Text = ""
Text7.Text = ""
End Sub
Private Sub Command3_Click()
Unload Me
End Sub
Private Sub Command4_Click()
End
End Sub
Private Sub menuback_Click()
Unload Me
End Sub
Private Sub mnuexit_Click()
End
End Sub
Private Sub Option1_Click()
If Option1.Value = True Then
Label7.Caption = "ความน่าจะเป็นที่ P(x)"
Label2.Caption = "โอกาสที่จะพบของเสีย X"

```

```

End If
End Sub
Private Sub Option2_Click()
If Option2.Value = True Then
Label7.Caption = "ความน่าจะเป็นที่  $P(x \leq x)$ "
Label2.Caption = "โอกาสที่จะพบของเสีย  $\leq X$ "

```

```
End If
```

```
End Sub
```

```
Private Sub กหฟหก_Click()
```

```
On Error GoTo error1
```

```
Set explorer = New SHDocVw.InternetExplorer
```

```
explorer.Visible = True
```

```
explorer.Navigate Text8.Text
```

```
Exit Sub
```

```
error1:
```

```
MsgBox "can't open HTML Document", , Err.Description
```

```
End Sub
```

```
Private Sub หหห_Click()
```

```
Form3.Show vbModal
```

```
End Sub
```

Form 71

```
Public explorer As SHDocVw.InternetExplorer
```

```
Dim a, b, c, d, e, f, g, aa, bb, cc, dd, ee, ff As Single
```

```
Private Sub Command1_Click()
```

```
a = Text1.Text
```

```
b = Text2.Text
```

```
c = Text3.Text
```

```
d = (c - a) / (b ^ (1 / 2))
```

```
Text4.Text = Format(d, "##.##")
```

```
End Sub
```

```
Private Sub menux1xo_Click()
```

```
Form9.Show vbModal
```

```

End Sub
Private Sub Command2_Click()
aa = Text5.Text
bb = Text6.Text
cc = Text7.Text
dd = Text8.Text
ee = (cc - aa) / (bb ^ (1 / 2))
ff = (dd - aa) / (bb ^ (1 / 2))
Text9.Text = Format(ee, "##.##")
Text10.Text = Format(ff, "##.##")
End Sub
Private Sub menuback_Click()
Unload Me
End Sub
Private Sub กกก_Click()
On Error GoTo error1
Set explorer = New SHDocVw.InternetExplorer
explorer.Visible = True
explorer.Navigate Text11.Text
Exit Sub
error1:
MsgBox "can't open HTML Document", , Err.Description
End Sub
Private Sub หกหก_Click()
Form3.Show vbModal
End Sub
Private Sub หหห_Click()
End
End Sub

```

Form 9

```

Public explorer As SHDocVw.InternetExplorer
Dim a, b, c, d As Single

```

```

Private Sub Command1_Click()
a = Text1.Text
b = Text2.Text
c = Text3.Text
e = a - 1
Text6.Text = e
d = ((a - 1) * (c ^ 2)) / (b ^ 2)
Text4.Text = Format(d, "###.##")
End Sub

Private Sub menuback_Click()
Unload Me
End Sub

Private Sub กดกด_Click()
Form3.Show vbModal
End Sub

Private Sub ดกดกด_Click()
End
End Sub

Private Sub หกด_Click()
On Error GoTo error1
Set explorer = New SHDocVw.InternetExplorer
explorer.Visible = True
explorer.Navigate Text5.Text
Exit Sub
error1:
MsgBox "can't open HTML Document", , Err.Description
End Sub

```

Form 10

```
Public explorer As SHDocVw.InternetExplorer
```

```
Private Sub Command1_Click()
```

```
Form11.Show vbModal
```

```
End Sub
```



```
Private Sub Command2_Click()
Form12.Show vbModal
End Sub
Private Sub Command3_Click()
Form13.Show vbModal
End Sub
Private Sub Command4_Click()
Unload Me
End Sub
Private Sub Command5_Click()
End
End Sub
Private Sub menuback_Click()
Unload Me
End Sub
Private Sub menufileexit_Click()
End
End Sub
Private Sub mcnuhelpabout_Click()
Form3.Show vbModal
End Sub
Private Sub menuhelphelp_Click()
On Error GoTo error1
Set explorer = New SHDocVw.InternetExplorer
explorer.Visible = True
explorer.Navigate Text1.Text
Exit Sub
error1:
MsgBox "can't open HTML Document", , Err.Description
End Sub
```

Form 11

Public explorer As SHDocVw.InternetExplorer

Private Sub Command1\_Click()

Form4.Show vbModal

End Sub

Private Sub Command2\_Click()

Form5.Show vbModal

End Sub

Private Sub Command3\_Click()

Form6.Show vbModal

End Sub

Private Sub Command4\_Click()

Unload Me

End Sub

Private Sub Command5\_Click()

End

End Sub

Private Sub menuback\_Click()

Unload Me

End Sub

Private Sub menufileexit\_Click()

End

End Sub

Private Sub menuhelpabout\_Click()

Form3.Show vbModal

End Sub

Private Sub menuhelphelp\_Click()

On Error GoTo error1

Set explorer = New SHDocVw.InternetExplorer

explorer.Visible = True

explorer.Navigate Text1.Text

Exit Sub

error1:

MsgBox "can't open HTML Document", , Err.Description

End Sub

## Form 12

Public explorer As SHDocVw.InternetExplorer

Private Sub Command1\_Click()

Form71.Show vbModal

End Sub

Private Sub Command2\_Click()

Form8.Show vbModal

End Sub

Private Sub Command3\_Click()

Form9.Show vbModal

End Sub

Private Sub Command4\_Click()

Unload Me

End Sub

Private Sub Command5\_Click()

End

End Sub

Private Sub menuback\_Click()

Unload Me

End Sub

Private Sub menufileexit\_Click()

End

End Sub

Private Sub menuhelpabout\_Click()

Form3.Show vbModal

End Sub

Private Sub menuhelphelp\_Click()

On Error GoTo error1

Set explorer = New SHDocVw.InternetExplorer

```

explorer.Visible = True
explorer.Navigate Text1.Text
Exit Sub
error1:
MsgBox "can't open HTML Document", , Err.Description
End Sub

```

Form 13

```
Public explorer As SHDocVw.InternetExplorer
```

```
Dim b, eee, i, zzz(999), ii, iii, vv, sss, ssss As Single
```

```
Private Sub Command1_Click()
```

```
b = Text2.Text
```

```
eee = b
```

```
MSFlexGrid1.Rows = b + 1
```

```
MSFlexGrid1.Cols = 2
```

```
For i = 1 To eee
```

```
MSFlexGrid1.Row = i
```

```
MSFlexGrid1.Col = 0
```

```
MSFlexGrid1.Text = "ข้อมูลที่ " & i
```

```
Next i
```

```
MSFlexGrid1.Row = 0
```

```
MSFlexGrid1.Col = 1
```

```
MSFlexGrid1.Text = "ข้อมูล"
```

```
End Sub
```

```
Private Sub Command2_Click()
```

```
For i = 1 To eee
```

```
MSFlexGrid1.Row = i
```

```
MSFlexGrid1.Col = 1
```

```
zzz(i) = MSFlexGrid1.Text
```

```
ii = ii + Val(zzz(i))
```

```
Next i
```

```
iii = ii / eee
```

```

For i = 1 To eee
vv = Val(vv) + ((Val(zzz(i)) - iii) ^ 2)
Next i
For i = 1 To eee
sss = (vv / (eee - 1)) ^ (1 / 2)
Next i
ssss = sss ^ 2
Text3.Text = Format(iii, "####.###")
Text4.Text = Format(sss, "####.###")
Text5.Text = Format(ssss, "####.###")
ii = 0
iii = 0
vv = 0
End Sub
Private Sub Command3_Click()
Unload Me
End Sub
Private Sub Command4_Click()
End
End Sub
Private Sub menufileback_Click()
Unload Me
End Sub
Private Sub menufileexit_Click()
End
End Sub
Private Sub menuhelpabout_Click()
Form3.Show vbModal
End Sub
Private Sub menuhelphelp_Click()
On Error GoTo error1
Set explorer = New SHDocVw.InternetExplorer

```

```

explorer.Visible = True
explorer.Navigate Text6.Text
Exit Sub
error1:
MsgBox "can't open HTML Document", , Err.Description
End Sub
Private Sub Text1_Change()
MSFlexGrid1.Text = Text1.Text
End Sub
Private Sub MSFlexGrid1_Click()
Text1.Text = ""
Text1.SetFocus
End Sub
Public explorer As SHDocVw.InternetExplorer
Public a21, a22, a23, a24, a25, a26, a27, a28, a29, a30, a31, a32, a33, a34, a35, a36, a37, a38, a39, a40, a41,
c1 As Single
Private Sub Command1_Click()
Dim a(10) As Integer, y As Integer
Dim i, j As Integer
If Text11.Text = "" Then
Text11.Text = 0
k = k + 1
End If
If Text12.Text = "" Then
Text12.Text = 0
k = k + 1
End If
If Text13.Text = "" Then
Text13.Text = 0
k = k + 1
End If

```

Form 14

If Text14.Text = "" Then

Text14.Text = 0

k = k + 1

End If

If Text15.Text = "" Then

Text15.Text = 0

k = k + 1

End If

If Text16.Text = "" Then

Text16.Text = 0

k = k + 1

End If

If Text17.Text = "" Then

Text17.Text = 0

k = k + 1

End If

If Text18.Text = "" Then

Text18.Text = 0

k = k + 1

End If

If Text19.Text = "" Then

Text19.Text = 0

k = k + 1

End If

If Text20.Text = "" Then

Text20.Text = 0

k = k + 1

End If

a(1) = Text11.Text

a(2) = Text12.Text

a(3) = Text13.Text

a(4) = Text14.Text



```
a(5) = Text15.Text  
a(6) = Text16.Text  
a(7) = Text17.Text  
a(8) = Text18.Text  
a(9) = Text19.Text  
a(10) = Text20.Text
```

```
For i = 2 To 10
```

```
  y = a(i)
```

```
  a(0) = y
```

```
  j = i - 1
```

```
  Do While y > a(j)
```

```
    a(j + 1) = a(j)
```

```
    j = j - 1
```

```
  Loop
```

```
  a(j + 1) = y
```

```
Next i
```

```
Text21.Text = a(1)
```

```
Text22.Text = a(2)
```

```
Text23.Text = a(3)
```

```
Text24.Text = a(4)
```

```
Text25.Text = a(5)
```

```
Text26.Text = a(6)
```

```
Text27.Text = a(7)
```

```
Text28.Text = a(8)
```

```
Text29.Text = a(9)
```

```
Text30.Text = a(10)
```

```
End Sub
```

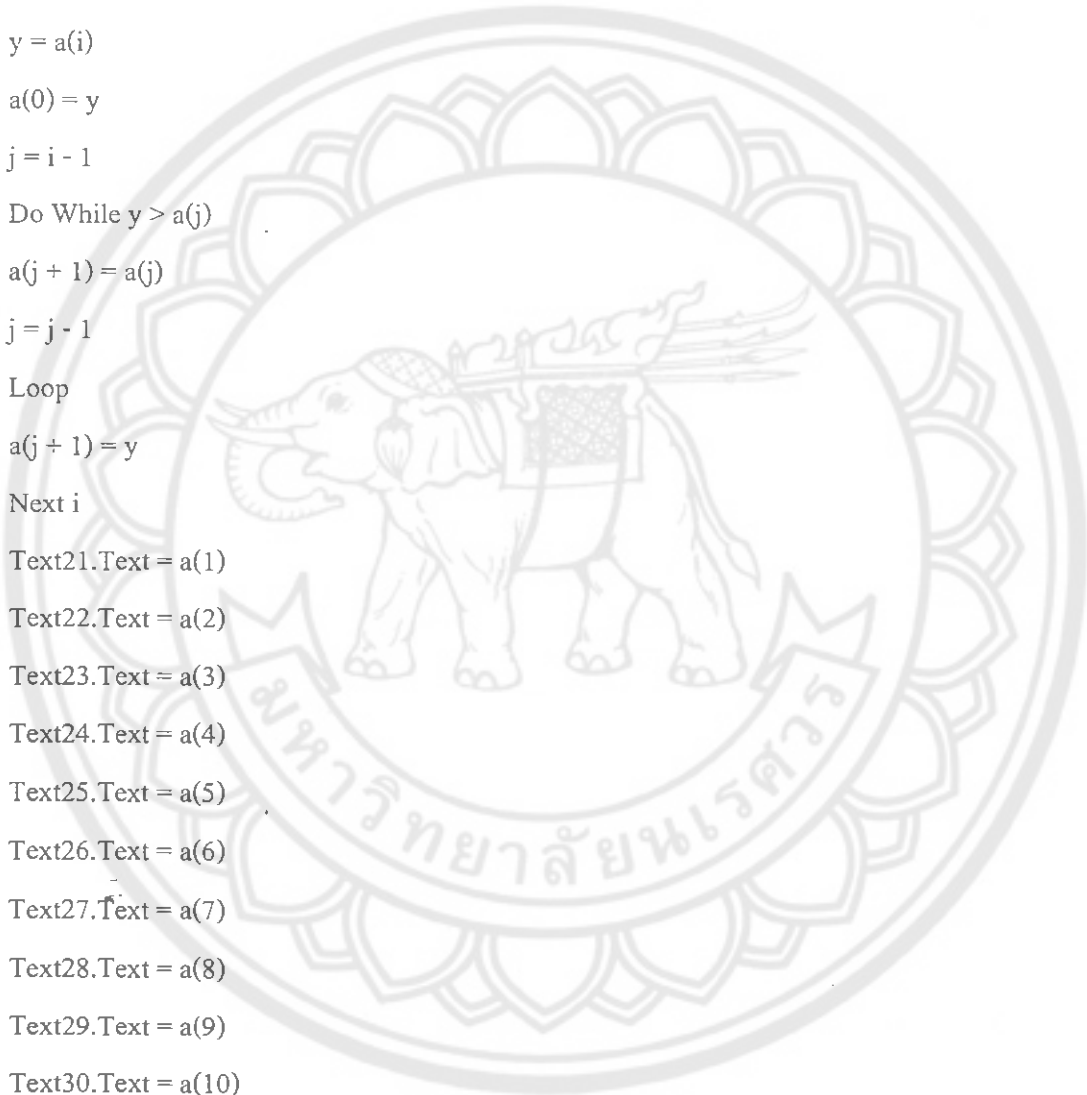
```
Private Sub Command2_Click()
```

```
  Form1.Cls
```

```
  Text1.Text = ""
```

```
  Text2.Text = ""
```

```
  Text3.Text = ""
```





Text4.Text = ""  
Text5.Text = ""  
Text6.Text = ""  
Text7.Text = ""  
Text8.Text = ""  
Text9.Text = ""  
Text10.Text = ""  
Text11.Text = ""  
Text12.Text = ""  
Text13.Text = ""  
Text14.Text = ""  
Text15.Text = ""  
Text16.Text = ""  
Text17.Text = ""  
Text18.Text = ""  
Text19.Text = ""  
Text20.Text = ""  
Text21.Text = ""  
Text22.Text = ""  
Text23.Text = ""  
Text24.Text = ""  
Text25.Text = ""  
Text26.Text = ""  
Text27.Text = ""  
Text28.Text = ""  
Text29.Text = ""  
Text30.Text = ""  
Text31.Text = ""  
Text32.Text = ""  
Text33.Text = ""  
Text34.Text = ""  
Text35.Text = ""



```
Text36.Text = ""
Text37.Text = ""
Text38.Text = ""
Text39.Text = ""
Text40.Text = ""
End Sub
Private Sub Command3_Click()
If Text31.Text = "" Then
Text31.Text = 0
End If
If Text32.Text = "" Then
Text32.Text = 0
End If
If Text33.Text = "" Then
Text33.Text = 0
End If
If Text34.Text = "" Then
Text34.Text = 0
End If
If Text35.Text = "" Then
Text35.Text = 0
End If
If Text36.Text = "" Then
Text36.Text = 0
End If
If Text37.Text = "" Then
Text37.Text = 0
End If
If Text38.Text = "" Then
Text38.Text = 0
End If
If Text39.Text = "" Then
```



```
Text39.Text = 0
End If
If Text40.Text = "" Then
Text40.Text = 0
End If
b(11) = Text31.Text
b(12) = Text32.Text
b(13) = Text33.Text
b(14) = Text34.Text
b(15) = Text35.Text
b(16) = Text36.Text
b(17) = Text37.Text
b(18) = Text38.Text
b(19) = Text39.Text
b(20) = Text40.Text
a21 = Text11.Text
a22 = Text12.Text
a23 = Text13.Text
a24 = Text14.Text
a25 = Text15.Text
a26 = Text16.Text
a27 = Text17.Text
a28 = Text18.Text
a29 = Text19.Text
a30 = Text20.Text
c1 = Val(a21) + Val(a22) + Val(a23) + Val(a24) + Val(a25) + Val(a26) + Val(a27) + Val(a28) + Val(a29) +
Val(a30)
a31 = Text21.Text
a32 = Text22.Text
a33 = Text23.Text
a34 = Text24.Text
a35 = Text25.Text
```

```
a36 = Text26.Text
a37 = Text27.Text
a38 = Text28.Text
a39 = Text29.Text
a40 = Text30.Text
b(1) = (a31 / c1) * 100
b(2) = (a32 / c1) * 100
b(3) = (a33 / c1) * 100
b(4) = (a34 / c1) * 100
b(5) = (a35 / c1) * 100
b(6) = (a36 / c1) * 100
b(7) = (a37 / c1) * 100
b(8) = (a38 / c1) * 100
b(9) = (a39 / c1) * 100
b(10) = (a40 / c1) * 100
End Sub
Private Sub Command4_Click()
Form15.Show vbModal
End Sub
Private Sub Command5_Click()
Unload Me
End Sub
Private Sub Command6_Click()
End
End Sub
Private Sub Command7_Click()
Dim i As Integer
CommonDialog1.ShowPrinter
For i = 1 To CommonDialog1.Copies
PrintForm
Next i
End Sub
```

```
Private Sub gfh_Click()
```

```
Unload Me
```

```
End Sub
```

```
Private Sub กด_Click()
```

```
End
```

```
End Sub
```

```
Private Sub กดก_Click()
```

```
On Error GoTo error1
```

```
Set explorer = New SHDocVw.InternetExplorer
```

```
explorer.Visible = True
```

```
explorer.Navigate Text41.Text
```

```
Exit Sub
```

```
error1:
```

```
MsgBox "can't open HTML Document", , Err.Description
```

```
End Sub
```

```
Private Sub กดค_Click()
```

```
Form3.Show vbModal
```

```
End Sub
```

Form 15

```
Private Sub Command1_Click()
```

```
Unload Me
```

```
End Sub
```

```
Private Sub Command2_Click()
```

```
MSChart1.chartType = 0
```

```
MSChart2.chartType = 2
```

```
End Sub
```

```
Private Sub Command3_Click()
```

```
Dim i As Integer
```

```
CommonDialog1.ShowPrinter
```

```
For i = 1 To CommonDialog1.Copies
```

```
PrintForm
```

```

Next i
End Sub
Private Sub Command4_Click()
MSChart1.chartType = 1
MSChart2.chartType = 3
End Sub
Private Sub Command5_Click()
End
End Sub
Private Sub Form_Load()
Dim j, l As Integer
j = 10 - k
MSChart1.RowCount = j
For l = 1 To j
MSChart1.Row = l
MSChart1.Data = b(l)
MSChart1.RowLabel = b(l + 10)
Next l
MSChart2.RowCount = j
MSChart2.Row = 1
MSChart2.Data = b(1)
MSChart2.RowLabel = b(11)
For l = 2 To j
b(l) = b(l) + b(1)
MSChart2.Row = l
MSChart2.Data = b(l)
MSChart2.RowLabel = b(l + 10)
Next l
End Sub

```

Form 18

```
Public explorer As SHDocVw.InternetExplorer
```

```
Private Sub Command1_Click()
```

```
Form32.Show vbModal
End Sub
Private Sub Command2_Click()
Form19.Show vbModal
End Sub
Private Sub Command3_Click()
Form29.Show vbModal
End Sub
Private Sub Command4_Click()
Form22.Show vbModal
End Sub
Private Sub Command5_Click()
Form25.Show vbModal
End Sub
Private Sub Command6_Click()
Form27.Show vbModal
End Sub
Private Sub Command7_Click()
Unload Me
End Sub
Private Sub Command8_Click()
End
End Sub
Private Sub เมท_Click()
End
End Sub
Private Sub เมท_Click()
On Error GoTo error1
Set explorer = New SHDocVw.InternetExplorer
explorer.Visible = True
explorer.Navigate Text1.Text
Exit Sub
```

error1:

MsgBox "can't open HTML Document", . Err.Description

End Sub

Private Sub cmdOk\_Click()

Form3.Show vbModal

End Sub

Private Sub cmdCancel\_Click()

Unload Me

End Sub

Form 19

Public explorer As SHDocVw.InternetExplorer

Dim z(999, 999), x(999), v(1) As Single

Dim a, b, c, d, f, g, i, j, l, m, n, o, p, s, r As Single

Private Sub Command1\_Click()

b = Text2.Text

c = Text3.Text

c = b

f = c

m = c + 1

MSFlexGrid1.Rows = b + 1

MSFlexGrid1.Cols = c + 2

For i = 1 To c

MSFlexGrid1.Row = i

MSFlexGrid1.Col = 0

MSFlexGrid1.Text = "กลุ่มที่ " & i

Next i

For i = 1 To f

MSFlexGrid1.Row = 0

MSFlexGrid1.Col = i

MSFlexGrid1.Text = "ค่าที่ " & i

Next i

MSFlexGrid1.Row = 0



```

MSFlexGrid1.Col = m
MSFlexGrid1.Text = "พื้ข(R)"
End Sub

Private Sub Command2_Click()
n = e - 2
For d = 1 To e
For i = 1 To f
MSFlexGrid1.Row = d
MSFlexGrid1.Col = i
z(i, d) = MSFlexGrid1.Text
Next i
Next d
a = Val(z(1, 1))
For j = 1 To e
For i = 2 To f
a = Val(a) + Val(z(i, j))
Next i
Next j
For i = 2 To e
a = Val(a) + Val(z(1, i))
Next i
l = e * f
d = a / l
For i = 1 To e
MSFlexGrid1.Row = i
MSFlexGrid1.Col = m
y(i) = MSFlexGrid1.Text
Next i
For i = 1 To e
v(1) = v(1) + y(i)
Next i
p = v(1) / e

```



```

Data1.Recordset.Move n
o = Text4.Text
uclx = d + (o * p)
clx = d
lclx = d - (o * p)
If lclx < 0 Then
    lclx = 0
End If
Text5.Text = uclx
Text6.Text = clx
Text7.Text = lclx
For j = 1 To e
    For i = 1 To f
        x(j) = Val(x(j)) + Val(z(i, j))
    Next i
Next j
For i = 1 To c
    w(i) = Val(x(i)) * f
Next i
r = Text8.Text
s = Text9.Text
uclr = p * s
clr = p
lclr = p * r
If lclr < 0 Then
    lclr = 0
End If
Text10.Text = uclr
Text11.Text = clr
Text12.Text = lclr
a = 0
p = 0

```



```
n = 0
Data1.Recordset.MoveFirst
v(1) = 0
End Sub

Private Sub Command3_Click()
MSChart1.RowCount = e
For i = 1 To e
MSChart1.Row = i
MSChart1.RowLabel = i
Next i
MSChart1.Column = 1
For i = 1 To e
MSChart1.Row = i
MSChart1.Data = w(i)
Next i
MSChart1.Column = 2
For i = 1 To e
MSChart1.Row = i
MSChart1.Data = uclx
Next i
MSChart1.Column = 3
For i = 1 To e
MSChart1.Row = i
MSChart1.Data = clx
Next i
MSChart1.Column = 4
For i = 1 To e
MSChart1.Row = i
MSChart1.Data = lclx
Next i
End Sub
```



```
Private Sub Command4_Click()
```

```
Form20.Show vbModal
```

```
End Sub
```

```
Private Sub Command5_Click()
```

```
MSChart1.RowCount = e
```

```
For i = 1 To e
```

```
MSChart1.Row = i
```

```
MSChart1.RowLabel = i
```

```
Next i
```

```
MSChart1.Column = 1
```

```
For i = 1 To e
```

```
MSChart1.Row = i
```

```
MSChart1.Data = y(i)
```

```
Next i
```

```
MSChart1.Column = 2
```

```
For i = 1 To e
```

```
MSChart1.Row = i
```

```
MSChart1.Data = uelr
```

```
Next i
```

```
MSChart1.Column = 3
```

```
For i = 1 To e
```

```
MSChart1.Row = i
```

```
MSChart1.Data = clr
```

```
Next i
```

```
MSChart1.Column = 4
```

```
For i = 1 To e
```

```
MSChart1.Row = i
```

```
MSChart1.Data = iclr
```

```
Next i
```

```
End Sub
```

```
Private Sub Command7_Click()
```

```
Unload Me
```



```
End Sub
Private Sub Command8_Click()
End
End Sub
Private Sub Form_Load()
MSFlexGrid1.ColWidth(0) = 1000
End Sub
Private Sub Text1_Change()
MSFlexGrid1.Text = Text1.Text
End Sub
Private Sub MSFlexGrid1_Click()
Text1.Text = ""
Text1.SetFocus
End Sub
Private Sub Command6_Click()
Form21.Show vbModal
End Sub
Private Sub กดหนก_Click()
Form3.Show vbModal
End Sub
Private Sub กดค_Click()
Unload Me
End Sub
Private Sub ดัดกด_Click()
On Error GoTo error1
Set explorer = New SHDocVw.InternetExplorer
explorer.Visible = True
explorer.Navigate Text13.Text
Exit Sub
error1:
MsgBox "can't open HTML Document", , Err.Description
End Sub
```

```
Private Sub ๓๓๓๓_Click()
```

```
End
```

```
End Sub
```

Form 20

```
Dim i As Single
```

```
Private Sub Command1_Click()
```

```
MSChart1.RowCount = e
```

```
MSChart1.Column = 1
```

```
For i = 1 To e
```

```
MSChart1.Row = i
```

```
MSChart1.Data = w(i)
```

```
Next i
```

```
MSChart1.Column = 2
```

```
For i = 1 To e
```

```
MSChart1.Row = i
```

```
MSChart1.Data = uclx
```

```
Next i
```

```
MSChart1.Column = 3
```

```
For i = 1 To e
```

```
MSChart1.Row = i
```

```
MSChart1.Data = clx
```

```
Next i
```

```
MSChart1.Column = 4
```

```
For i = 1 To e
```

```
MSChart1.Row = i
```

```
MSChart1.Data = lclx
```

```
Next i
```

```
Text1.Text = uclx
```

```
Text2.Text = clx
```

```
Text3.Text = lclx
```

```
End Sub
```

```
Private Sub Command2_Click()  
Dim i As Integer  
CommonDialog1.ShowPrinter  
For i = 1 To CommonDialog1.Copies  
PrintForm  
Next i  
End Sub
```

```
Private Sub Command3_Click()
```

```
Unload Me
```

```
End Sub
```

```
Private Sub Command4_Click()
```

```
End
```

```
End Sub
```

Form 21

```
Dim i As Single
```

```
Private Sub Command1_Click()
```

```
MSChart1.RowCount = e
```

```
For i = 1 To e
```

```
MSChart1.Row = i
```

```
MSChart1.RowLabel = i
```

```
Next i
```

```
MSChart1.Column = 1
```

```
For i = 1 To e
```

```
MSChart1.Row = i
```

```
MSChart1.Data = y(i)
```

```
Next i
```

```
MSChart1.Column = 2
```

```
For i = 1 To e
```

```
MSChart1.Row = i
```

```
MSChart1.Data = uclr
```

```
Next i
```

```
MSChart1.Column = 3
```

```

For i = 1 To e
MSChart1.Row = i
MSChart1.Data = clr
Next i

MSChart1.Column = 4
For i = 1 To e
MSChart1.Row = i
MSChart1.Data = clr
Next i

Text1.Text = uclr
Text2.Text = clr
Text3.Text = lclr
End Sub

Private Sub Command2_Click()
Dim i As Integer
CommonDialog1.ShowPrinter
For i = 1 To CommonDialog1.Copies
PrintForm
Next i
End Sub

Private Sub Command3_Click()
Unload Me
End Sub

Private Sub Command4_Click()
End
End Sub

```

Form 22

```

Public explorer As SHDocVw.InternetExplorer
Dim i, x(999), y, v, cl As Single
Private Sub Command1_Click()
a = Text2.Text
MSFlexGrid1.Rows = a + 1

```



```

For i = 1 To a
MSFlexGrid1.Row = i
MSFlexGrid1.Col = 0
MSFlexGrid1.Text = "ตัวอย่างที่ " & i
Next i
MSFlexGrid1.Cols = 3
MSFlexGrid1.Row = 0
MSFlexGrid1.Col = 1
MSFlexGrid1.Text = "ตัวอย่าง n"
MSFlexGrid1.Row = 0
MSFlexGrid1.Col = 2
MSFlexGrid1.Text = "ของเสีย np"
End Sub
Private Sub Command2_Click()
For i = 1 To a
MSFlexGrid1.Row = i
MSFlexGrid1.Col = 1
x(i) = MSFlexGrid1.Text
Next i
For i = 1 To a
y = y + Val(x(i))
Next i
For i = 1 To a
MSFlexGrid1.Row = i
MSFlexGrid1.Col = 2
z(i) = MSFlexGrid1.Text
Next i
For i = 1 To a
v = v + Val(z(i))
Next i
p = v / y
For i = 1 To a

```

```

uelp(i) = p + 3 * (((p * (1 - p)) / x(i)) ^ (1 / 2))
Next i
vlp = p
For i = 1 To a
kelp(i) = p - 3 * (((p * (1 - p)) / x(i)) ^ (1 / 2))
If kelp(i) < 0 Then
lelp(i) = 0
End If
Next i
For i = 1 To a
c(i) = Val(z(i)) / Val(x(i))
Next i
For i = 1 To a
uelnp(i) = (x(i) * p) + (3 * ((x(i) * p * (1 - p)) ^ (1 / 2)))
Next i
For i = 1 To a
elnp(i) = x(i) * p
Next i
For i = 1 To a
lelnp(i) = (x(i) * p) - (3 * ((x(i) * p * (1 - p)) ^ (1 / 2)))
If lelnp(i) < 0 Then
lelnp(i) = 0
End If
Next i
MSFlexGrid2.Rows = a + 1
For i = 1 To a
MSFlexGrid2.Row = i
MSFlexGrid2.Col = 0
MSFlexGrid2.Text = "ตัวอย่างที่ " & i
Next i

For i = 1 To a

```

```
MSFlexGrid2.Row = i
MSFlexGrid2.Col = 1
MSFlexGrid2.Text = c(i)
Next i
For i = 1 To a
MSFlexGrid2.Row = i
MSFlexGrid2.Col = 2
MSFlexGrid2.Text = uclp(i)
Next i
For i = 1 To a
MSFlexGrid2.Row = i
MSFlexGrid2.Col = 3
MSFlexGrid2.Text = clp
Next i
For i = 1 To a
MSFlexGrid2.Row = i
MSFlexGrid2.Col = 4
MSFlexGrid2.Text = lclp(i)
Next i
For i = 1 To a
MSFlexGrid2.Row = i
MSFlexGrid2.Col = 5
MSFlexGrid2.Text = uclnp(i)
Next i
For i = 1 To a
MSFlexGrid2.Row = i
MSFlexGrid2.Col = 6
MSFlexGrid2.Text = clnp(i)
Next i
For i = 1 To a
MSFlexGrid2.Row = i
MSFlexGrid2.Col = 7,
```



```

MSFlexGrid2.Text = lclnp(i)
Next i
End Sub

Private Sub Command3_Click()
MSChart1.RowCount = a
For i = 1 To a
MSChart1.Row = i
MSChart1.RowLabel = i
Next i
MSChart1.Column = 1
For i = 1 To a
MSChart1.Row = i
MSChart1.Data = c(i)
Next i
MSChart1.Column = 2
For i = 1 To a
MSChart1.Row = i
MSChart1.Data = uclp(i)
Next i
MSChart1.Column = 3
For i = 1 To a
MSChart1.Row = i
MSChart1.Data = p
Next i
MSChart1.Column = 4
For i = 1 To a
MSChart1.Row = i
MSChart1.Data = lclp(i)
Next i
End Sub

Private Sub Command4_Click()

```

```

Form23.Show vbModal
End Sub

Private Sub Command5_Click()
MSChart1.RowCount = a
For i = 1 To a
MSChart1.Row = i
MSChart1.RowLabel = i
Next i
MSChart1.Column = 1
For i = 1 To a
MSChart1.Row = i
MSChart1.Data = z(i)
Next i
MSChart1.Column = 2
For i = 1 To a
MSChart1.Row = i
MSChart1.Data = uclnp(i)
Next i
MSChart1.Column = 3
For i = 1 To a
MSChart1.Row = i
MSChart1.Data = clnp(i)
Next i
MSChart1.Column = 4
For i = 1 To a
MSChart1.Row = i
MSChart1.Data = lclnp(i)
Next i
End Sub

Private Sub Command6_Click()
Form24.Show vbModal
End Sub

```



```
Private Sub Command7_Click()
Unload Me
End Sub
Private Sub Command8_Click()
End
End Sub
Private Sub Form_Load()
MSFlexGrid2.Cols = 8
MSFlexGrid2.Row = 0
MSFlexGrid2.Col = 1
MSFlexGrid2.Text = "สัดส่วนของเสีย p"
MSFlexGrid2.Row = 0
MSFlexGrid2.Col = 2
MSFlexGrid2.Text = "UCL p chart"
MSFlexGrid2.Row = 0
MSFlexGrid2.Col = 3
MSFlexGrid2.Text = "CL p chart"
MSFlexGrid2.Row = 0
MSFlexGrid2.Col = 4
MSFlexGrid2.Text = "LCL p chart"
MSFlexGrid2.Row = 0
MSFlexGrid2.Col = 5
MSFlexGrid2.Text = "UCL np chart"
MSFlexGrid2.Row = 0
MSFlexGrid2.Col = 6
MSFlexGrid2.Text = "CL np chart"
MSFlexGrid2.Row = 0
MSFlexGrid2.Col = 7
MSFlexGrid2.Text = "LCL np chart"
MSFlexGrid1.ColWidth(0) = 1000
MSFlexGrid2.ColWidth(0) = 1000
MSFlexGrid2.ColWidth(1) = 1400
```

```
MSFlexGrid2.ColWidth(2) = 1200
MSFlexGrid2.ColWidth(3) = 1200
MSFlexGrid2.ColWidth(4) = 1200
MSFlexGrid2.ColWidth(5) = 1200
MSFlexGrid2.ColWidth(6) = 1200
MSFlexGrid2.ColWidth(7) = 1200

End Sub

Private Sub Text1_Change()
MSFlexGrid1.Text = Text1.Text
End Sub

Private Sub MSFlexGrid1_Click()
Text1.Text = ""
Text1.SetFocus
End Sub

Private Sub ดกดคพห_Click()
On Error GoTo error1
Set explorer = New SHDocVw.InternetExplorer
explorer.Visible = True
explorer.Navigate Text3.Text
Exit Sub
error1:
MsgBox "can't open HTML Document", , Err.Description
End Sub

Private Sub เดก_Click()
End
End Sub

Private Sub เดเก้_Click()
Unload Me
End Sub

Private Sub ะพ็_Click()
Form3.Show vbModal
End Sub
```

```
Dim i As Single
Private Sub Command1_Click()
MSChart1.RowCount = a
For i = 1 To a
MSChart1.Row = i
MSChart1.RowLabel = i
Next i
MSChart1.Column = 1
For i = 1 To a
MSChart1.Row = i
MSChart1.Data = c(i)
Next i
MSChart1.Column = 2
For i = 1 To a
MSChart1.Row = i
MSChart1.Data = uclp(i)
Next i
MSChart1.Column = 3
For i = 1 To a
MSChart1.Row = i
MSChart1.Data = p
Next i
MSChart1.Column = 4
For i = 1 To a
MSChart1.Row = i
MSChart1.Data = lclp(i)
Next i
End Sub
Private Sub Command2_Click()
Dim i As Integer
CommonDialog1.ShowPrinter
```



```
For i = 1 To CommonDialog1.Copies
```

```
PrintForm
```

```
Next i
```

```
End Sub
```

```
Private Sub Command3_Click()
```

```
Unload Me
```

```
End Sub
```

```
Private Sub Command4_Click()
```

```
End
```

```
End Sub
```

Form 24

```
Dim i As Single
```

```
Private Sub Command1_Click()
```

```
MSChart1.RowCount = a
```

```
For i = 1 To a
```

```
MSChart1.Row = i
```

```
MSChart1.RowLabel = i
```

```
Next i
```

```
MSChart1.Column = 1
```

```
For i = 1 To a
```

```
MSChart1.Row = i
```

```
MSChart1.Data = z(i)
```

```
Next i
```

```
MSChart1.Column = 2
```

```
For i = 1 To a
```

```
MSChart1.Row = i
```

```
MSChart1.Data = uclnp(i)
```

```
Next i
```

```
MSChart1.Column = 3
```

```
For i = 1 To a
```

```
MSChart1.Row = i
```

```
MSChart1.Data = clnp(i)
```

```

Next i
MSChart1.Column = 4
For i = 1 To a
MSChart1.Row = i
MSChart1.Data = lclnp(i)
Next i
End Sub

Private Sub Command2_Click()
Dim i As Integer
CommonDialog1.ShowPrinter
For i = 1 To CommonDialog1.Copies
PrintForm
Next i
End Sub

Private Sub Command3_Click()
Unload Me
End Sub

Private Sub Command4_Click()
End
End Sub

Form 25

Public explorer As SHDocVw.InternetExplorer
Dim i, y, g, h As Single
Private Sub Command1_Click()
d = Text2.Text
MSFlexGrid1.Rows = d + 1
For i = 1 To d
MSFlexGrid1.Row = i
MSFlexGrid1.Col = 0
MSFlexGrid1.Text = "ครั้งที่พบรอยตำหนิ" & i
Next i
MSFlexGrid1.Cols = 2

```

```

MSFlexGrid1.Row = 0
MSFlexGrid1.Col = 1
MSFlexGrid1.Text = "จำนวนรอยตำหนิ (C)"
End Sub

Private Sub Command2_Click()
For i = 1 To d
MSFlexGrid1.Row = i
MSFlexGrid1.Col = 1
f(i) = MSFlexGrid1.Text
Next i
For i = 1 To d
y = y + Val(f(i))
Next i
g = y / d
h = g + (3 * (g ^ (1 / 2)))
uclc = CInt(h)
clc = g
lclc = g - (3 * (g ^ (1 / 2)))
If lclc < 0 Then
lclc = 0
End If
Text3.Text = uclc
Text4.Text = clc
Text5.Text = lclc
y = 0
End Sub

Private Sub Command3_Click()
MSChart1.RowCount = d
For i = 1 To d
MSChart1.Row = i
MSChart1.RowLabel = i
Next i

```

```
MSChart1.Column = 1
For i = 1 To d
MSChart1.Row = i
MSChart1.Data = f(i)
Next i
MSChart1.Column = 2
For i = 1 To d
MSChart1.Row = 1
MSChart1.Data = uclc
Next i
MSChart1.Column = 3
For i = 1 To d
MSChart1.Row = i
MSChart1.Data = clc
Next i
MSChart1.Column = 4
For i = 1 To d
MSChart1.Row = i
MSChart1.Data = lclc
Next i
End Sub
Private Sub Command4_Click()
Form26.Show vbModal
End Sub
Private Sub Command5_Click()
Unload Me
End Sub
Private Sub Command6_Click()
End
End Sub
Private Sub Form_Load()
MSFlexGrid1.ColWidth(0) = 1800
```

```

MSFlexGrid1.ColWidth(1) = 1800
End Sub

Private Sub Text1_Change()
MSFlexGrid1.Text = Text1.Text
End Sub

Private Sub MSFlexGrid1_Click()
Text1.Text = ""
Text1.SetFocus
End Sub

Private Sub ดกด_Click()
Form3.Show vbModal
End Sub

Private Sub ๓๗_Click()
Unload Me
End Sub

Private Sub ๓๓_Click()
On Error GoTo error1
Set explorer = New SHDocVw.InternetExplorer
explorer.Visible = True
explorer.Navigate Text6.Text
Exit Sub
error1:
MsgBox "can't open HTML Document", , Err.Description
End Sub

Private Sub ๓๓_Click()
End
End Sub

```

Form 26

```

Dim i As Single
Private Sub Command1_Click()
MSChart1.RowCount = d
For i = 1 To d

```

```

MSChart1.Row = i
MSChart1.RowLabel = i
Next i
MSChart1.Column = 1
For i = 1 To d
MSChart1.Row = i
MSChart1.Data = f(i)
Next i
MSChart1.Column = 2
For i = 1 To d
MSChart1.Row = i
MSChart1.Data = uclc
Next i
MSChart1.Column = 3
For i = 1 To d
MSChart1.Row = i
MSChart1.Data = clc
Next i
MSChart1.Column = 4
For i = 1 To d
MSChart1.Row = i
MSChart1.Data = lclc
Next i
Text1.Text = uclx
Text2.Text = clc
Text3.Text = lclx
End Sub

Private Sub Command2_Click()
Dim i As Integer
CommonDialog1.ShowPrinter
For i = 1 To CommonDialog1.Copies
PrintForm

```

```
Next i
End Sub
Private Sub Command3_Click()
Unload Me
End Sub
Private Sub Command4_Click()
End
End Sub
```

Form 27

```
Public explorer As SHDocVw.InternetExplorer
Dim h(999), j(999), i, y, z, u, x(999) As Single
Private Sub Command1_Click()
g = Text2.Text
MSFlexGrid1.Rows = g + 1
For i = 1 To g
MSFlexGrid1.Row = i
MSFlexGrid1.Col = 0
MSFlexGrid1.Text = "ครั้งที่พบรอยตำหนิ" & i
Next i
MSFlexGrid1.Cols = 3
MSFlexGrid1.Row = 0
MSFlexGrid1.Col = 1
MSFlexGrid1.Text = "จำนวนที่สุ่ม"
MSFlexGrid1.Row = 0
MSFlexGrid1.Col = 2
MSFlexGrid1.Text = "จำนวนรอยตำหนิ (C)"
End Sub
Private Sub Command2_Click()
For i = 1 To g
MSFlexGrid1.Row = i
MSFlexGrid1.Col = 1
h(i) = MSFlexGrid1.Text
```

```

Next i
For i = 1 To g
MSFlexGrid1.Row = i
MSFlexGrid1.Col = 2
j(i) = MSFlexGrid1.Text
Next i
For i = 1 To g
y = y + Val(h(i))
Next i
For i = 1 To g
z = z + Val(j(i))
Next i
u = z / y
For i = 1 To g
x(i) = u + (3 * ((u / h(i)) ^ (1 / 2)))
uclu(i) = x(i)
Next i
clu = u
For i = 1 To g
lclu(i) = u - (3 * ((u / h(i)) ^ (1 / 2)))
If lclu(i) < 0 Then
lclu(i) = 0
End If
Next i
For i = 1 To g
l(i) = Val(j(i)) / Val(h(i))
Next i
MSFlexGrid2.Rows = g + 1
For i = 1 To g
MSFlexGrid2.Row = i
MSFlexGrid2.Col = 0
MSFlexGrid2.Text = "ครั้งที่เกิดรอยดำหนิ " & i

```



```

Next i
MSFlexGrid2.Cols = 5
MSFlexGrid2.Row = 0
MSFlexGrid2.Col = 1
MSFlexGrid2.Text = "ค่าเฉลี่ย (U)"
MSFlexGrid2.Row = 0
MSFlexGrid2.Col = 2
MSFlexGrid2.Text = "UCL u chart"
MSFlexGrid2.Row = 0
MSFlexGrid2.Col = 3
MSFlexGrid2.Text = "CL u chart"
MSFlexGrid2.Row = 0
MSFlexGrid2.Col = 4
MSFlexGrid2.Text = "LCL u chart"
For i = 1 To g
MSFlexGrid2.Row = i
MSFlexGrid2.Col = 1
MSFlexGrid2.Text = l(i)
Next i
For i = 1 To g
MSFlexGrid2.Row = i
MSFlexGrid2.Col = 2
MSFlexGrid2.Text = uclu(i)
Next i
For i = 1 To g
MSFlexGrid2.Row = i
MSFlexGrid2.Col = 3
MSFlexGrid2.Text = ciu
Next i
For i = 1 To g
MSFlexGrid2.Row = i
MSFlexGrid2.Col = 4

```

```
MSFlexGrid2.Text = lclu(i)
Next i
End Sub

Private Sub Command3_Click()
MSChart1.RowCount = g
For i = 1 To g
MSChart1.Row = i
MSChart1.RowLabel = i
Next i
MSChart1.Column = 1
For i = 1 To g
MSChart1.Row = i
MSChart1.Data = l(i)
Next i
MSChart1.Column = 2
For i = 1 To g
MSChart1.Row = i
MSChart1.Data = uclu(i)
Next i
MSChart1.Column = 3
For i = 1 To g
MSChart1.Row = i
MSChart1.Data = clu
Next i
MSChart1.Column = 4
For i = 1 To g
MSChart1.Row = i
MSChart1.Data = lclu(i)
Next i
End Sub

Private Sub Command4_Click()
Form28.Show vbModal
```

```
End Sub
Private Sub Command5_Click()
Unload Me
End Sub
Private Sub Command6_Click()
End
End Sub
Private Sub Form_Load()
MSFlexGrid1.Cols = 3
MSFlexGrid1.ColWidth(0) = 1700
MSFlexGrid1.ColWidth(2) = 1700
MSFlexGrid2.ColWidth(0) = 1700
End Sub
Private Sub Text1_Change()
MSFlexGrid1.Text = Text1.Text
End Sub
Private Sub MSFlexGrid1_Click()
Text1.Text = ""
Text1.SetFocus
End Sub
Private Sub กดห_Click()
Form3.Show vbModal
End Sub
Private Sub กดทก_Click()
Unload Me
End Sub
Private Sub ดหกด_Click()
On Error GoTo error1
Set explorer = New SHDocVw.InternetExplorer
explorer.Visible = True
explorer.Navigate Text3.Text
Exit Sub
```

```
error1:
MsgBox "can't open HTML Document", , Err.Description
End Sub
Private Sub ฟกด_Click()
End
End Sub
```

Form 28

```
Dim i As Single
Private Sub Command1_Click()
MSChart1.RowCount = g
For i = 1 To g
MSChart1.Row = i
MSChart1.RowLabel = i
Next i
MSChart1.Column = 1
For i = 1 To g
MSChart1.Row = i
MSChart1.Data = l(i)
Next i
MSChart1.Column = 2
For i = 1 To g
MSChart1.Row = i
MSChart1.Data = ucl(i)
Next i
MSChart1.Column = 3
For i = 1 To g
MSChart1.Row = i
MSChart1.Data = clu
Next i
MSChart1.Column = 4
For i = 1 To g
MSChart1.Row = i
```

```

MSChart1.Data = lclu(i)
Next i
Text2.Text = clu
End Sub

Private Sub Command2_Click()
Dim i As Integer
CommonDialog1.ShowPrinter
For i = 1 To CommonDialog1.Copies
PrintForm
Next i
End Sub

Private Sub Command3_Click()
Unload Me
End Sub

Private Sub Command4_Click()
End
End Sub

Public explorer As SHDocVw.InternetExplorer
Dim z(999, 999), x(999), v(999) As Single
Dim a, b, c, d, f, g, i, j, l, m, n, o, p, q, r, s As Single
Private Sub Command1_Click()
b = Text2.Text
c = Text3.Text
h = b
f = c
m = c + 1
MSFlexGrid1.Rows = b + 1
MSFlexGrid1.Cols = c + 1
For i = 1 To h
MSFlexGrid1.Row = i
MSFlexGrid1.Col = 0

```

Form 29

```

MSFlexGrid1.Text = "กลุ่มที่ " & i
Next i
For i = 1 To f
MSFlexGrid1.Row = 0
MSFlexGrid1.Col = i
MSFlexGrid1.Text = "ค่าที่ " & i
Next i
MSFlexGrid2.Rows = b - 1
MSFlexGrid2.Cols = 2
For i = 1 To h
MSFlexGrid2.Row = i
MSFlexGrid2.Col = 0
MSFlexGrid2.Text = "กลุ่มที่ " & i
Next i
MSFlexGrid2.Row = 0
MSFlexGrid2.Col = 1
MSFlexGrid2.Text = "ความแปรปรวน"
End Sub
Private Sub Command2_Click()
n = c - 2
For d = 1 To h
For i = 1 To f
MSFlexGrid1.Row = d
MSFlexGrid1.Col = i
z(i, d) = MSFlexGrid1.Text
Next i
Next d
a = Val(z(1, 1))
For j = 1 To h
For i = 2 To f
a = Val(a) + Val(z(i, j))
Next i

```

```

Next j
For i = 2 To h
a = Val(a) + Val(z(1, i))
Next i
l = h * f
d = a / l
Data1.Recordset.Move n
o = Text4.Text
For j = 1 To h
For i = 1 To f
x(j) = Val(x(j)) + Val(z(i, j))
Next i
Next j
For i = 1 To h
t(i) = Val(x(i)) / f
Next i
For j = 1 To h
For i = 1 To f
v(j) = Val(v(j)) + ((Val(z(i, j)) - Val(t(j))) ^ 2)
Next i
Next j
For i = 1 To h
ss(i) = (v(i) / (f - 1)) ^ (1 / 2)
Next i
For i = 1 To h
MSFlexGrid2.Row = i
MSFlexGrid2.Col = 1
MSFlexGrid2.Text = ss(i)
Next i
For i = 1 To h
p = Val(p) + Val(ss(i))
Next i

```

```

q = p / h
uclxs = d + (o * q)
clxs = d
lclxs = d - (o * q)
If lclxs < 0 Then
    lclxs = 0
End If
Text5.Text = uclxs
Text6.Text = clxs
Text7.Text = lclxs
r = Text8.Text
s = Text9.Text
uclsx = q * s
clsx = q
lclsx = q * r
Text10.Text = uclsx
Text11.Text = clsx
Text12.Text = lclsx
n = 0
Data1.Recordset.MoveFirst
For i = 1 To h
    v(i) = 0
Next i
For i = 1 To h
    x(i) = 0
Next i
a = 0
p = 0
End Sub

Private Sub Command3_Click()
    MSChart1.RowCount = h
    For i = 1 To h

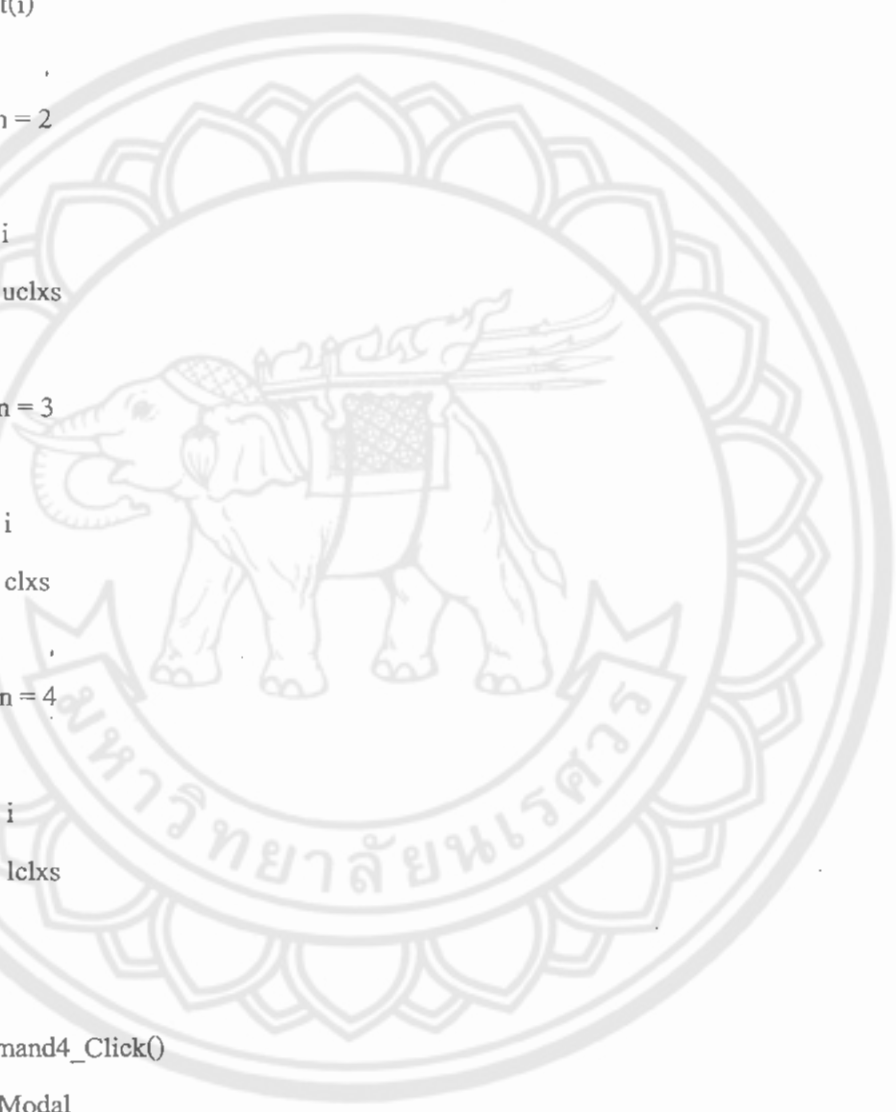
```



```

MSChart1.Row = i
MSChart1.RowLabel = i
Next i
MSChart1.Column = 1
For i = 1 To h
MSChart1.Row = i
MSChart1.Data = t(i)
Next i
MSChart1.Column = 2
For i = 1 To h
MSChart1.Row = i
MSChart1.Data = uclxs
Next i
MSChart1.Column = 3
For i = 1 To h
MSChart1.Row = i
MSChart1.Data = clxs
Next i
MSChart1.Column = 4
For i = 1 To h
MSChart1.Row = i
MSChart1.Data = lclxs
Next i
End Sub
Private Sub Command4_Click()
Form30.Show vbModal
End Sub
Private Sub Command5_Click()
MSChart1.RowCount = h
For i = 1 To h
MSChart1.Row = i
MSChart1.RowLabel = i

```



```
Next i
MSChart1.Column = 1
For i = 1 To h
MSChart1.Row = i
MSChart1.Data = ss(i)
Next i
MSChart1.Column = 2
For i = 1 To h
MSChart1.Row = i
MSChart1.Data = uclsx
Next i
MSChart1.Column = 3
For i = 1 To h
MSChart1.Row = i
MSChart1.Data = clsx
Next i
MSChart1.Column = 4
For i = 1 To h
MSChart1.Row = i
MSChart1.Data = lclsx
Next i
End Sub
Private Sub Command6_Click()
Form31.Show vbModal
End Sub
Private Sub Command7_Click()
Unload Me
End Sub
Private Sub Command8_Click()
End
End Sub
```

```

Private Sub Form_Load()
MSFlexGrid2.ColWidth(1) = 1400
End Sub

Private Sub Text1_Change()
MSFlexGrid1.Text = Text1.Text
End Sub

Private Sub MSFlexGrid1_Click()
Text1.Text = ""
Text1.SetFocus
End Sub

Private Sub กด_Click()
End
End Sub

Private Sub กดกด_Click()
Form3.Show vbModal
End Sub

Private Sub กดห_Click()
On Error GoTo error1
Set explorer = New SHDocVw.InternetExplorer
explorer.Visible = True
explorer.Navigate Text13.Text
Exit Sub
error1:
MsgBox "can't open HTML Document", , Err.Description
End Sub

Private Sub กดหกด_Click()

Unload Me
End Sub

Form 30

Dim i As Single

Private Sub Command1_Click()
MSChart1.RowCount = h

```

```

For i = 1 To h
MSChart1.Row = i
MSChart1.RowLabel = i
Next i

MSChart1.Column = 1
For i = 1 To h
MSChart1.Row = i
MSChart1.Data = t(i)
Next i

MSChart1.Column = 2
For i = 1 To h
MSChart1.Row = i
MSChart1.Data = uclxs
Next i

MSChart1.Column = 3
For i = 1 To h
MSChart1.Row = i
MSChart1.Data = clxs
Next i

MSChart1.Column = 4
For i = 1 To h
MSChart1.Row = i
MSChart1.Data = lclxs
Next i

Text1.Text = uclxs
Text2.Text = clxs
Text3.Text = lclxs

End Sub

Private Sub Command2_Click()
Dim i As Integer
CommonDialog1.ShowPrinter
For i = 1 To CommonDialog1.Copies

```

```
PrintForm
Next i
End Sub
Private Sub Command3_Click()
Unload Me
End Sub
Private Sub Command4_Click()
End
End Sub
```

Form 31

```
Dim i As Single
Private Sub Command1_Click()
MSChart1.RowCount = h
For i = 1 To h
MSChart1.Row = i
MSChart1.RowLabel = i
Next i
MSChart1.Column = 1
For i = 1 To h
MSChart1.Row = i
MSChart1.Data = ss(i)
Next i
MSChart1.Column = 2
For i = 1 To h
MSChart1.Row = i
MSChart1.Data = uclsx
Next i
MSChart1.Column = 3
For i = 1 To h
MSChart1.Row = i
MSChart1.Data = clsx
Next i
```

```

MSChart1.Column = 4
For i = 1 To h
MSChart1.Row = i
MSChart1.Data = lclsx
Next i
Text1.Text = uclsx
Text2.Text = clsx
Text3.Text = lclsx
End Sub

Private Sub Command2_Click()
Dim i As Integer
CommonDialog1.ShowPrinter
For i = 1 To CommonDialog1.Copies
PrintForm
Next i
End Sub

Public explorer As SHDocVw.InternetExplorer
Dim z(999, 999), x(999), v(999) As Single
Dim a, b, c, d, f, g, i, j, l, m, n, o, p, s, r As Single
Private Sub Command1_Click()
b = Text2.Text
ee = b
MSFlexGrid1.Rows = b + 1
MSFlexGrid1.Cols = 2
For i = 1 To ee
MSFlexGrid1.Row = i
MSFlexGrid1.Col = 0
MSFlexGrid1.Text = "ค่าข้อมูลที่ " & i
Next i
MSFlexGrid1.Row = 0
MSFlexGrid1.Col = 1

```

Form 32

```
MSFlexGrid1.Text = "ข้อมูล"
End Sub

Private Sub Command2_Click()
Unload Me
End Sub

Private Sub Command3_Click()
For i = 1 To ee
MSFlexGrid1.Row = i
MSFlexGrid1.Col = 1
we(i) = MSFlexGrid1.Text
Next i
ucle = Text5.Text
cle = Text6.Text
lcle = Text7.Text
MSChart1.RowCount = ee
For i = 1 To ee
MSChart1.Row = i
MSChart1.RowLabel = i
Next i
MSChart1.Column = 1
For i = 1 To ee
MSChart1.Row = i
MSChart1.Data = we(i)
Next i
MSChart1.Column = 2
For i = 1 To ee
MSChart1.Row = i
MSChart1.Data = ucle
Next i
MSChart1.Column = 3
For i = 1 To ee
MSChart1.Row = i
```

```
MSChart1.Data = cle
Next i
MSChart1.Column = 4
For i = 1 To ee
MSChart1.Row = i
MSChart1.Data = lcle
Next i
End Sub

Private Sub Command4_Click()
Form33.Show vbModal
End Sub

Private Sub Command5_Click()
End
End Sub

Private Sub Form_Load()
MSFlexGrid1.ColWidth(0) = 1200
MSFlexGrid1.ColWidth(1) = 1200
End Sub

Private Sub Text1_Change()
MSFlexGrid1.Text = Text1.Text
End Sub

Private Sub MSFlexGrid1_Click()
Text1.Text = ""
Text1.SetFocus
End Sub

Private Sub กดหยุด_Click()

Unload Me
End Sub

Private Sub ใ้กด_Click()
Form3.Show vbModal
End Sub
```



```
Private Sub ฟฟฟ_Click()
End
End Sub

Private Sub รั้_Click()
On Error GoTo error1
Set explorer = New SHDocVw.InternetExplorer
explorer.Visible = True
explorer.Navigate Text3.Text
Exit Sub
error1:
MsgBox "can't open HTML Document", , Err.Description
End Sub
```

Form 33

```
Dim i As Single
Private Sub Command1_Click()
MSChart1.RowCount = ee
For i = 1 To ee
MSChart1.Row = i
MSChart1.RowLabel = i
Next i
MSChart1.Column = 1
For i = 1 To ee
MSChart1.Row = i
MSChart1.Data = we(i)
Next i
MSChart1.Column = 2
For i = 1 To ee
MSChart1.Row = i
MSChart1.Data = ucle
Next i
MSChart1.Column = 3
For i = 1 To ee
```

```

MSChart1.Row = i
MSChart1.Data = cle
Next i
MSChart1.Column = 4
For i = 1 To ee
MSChart1.Row = i
MSChart1.Data = lcle
Next i
Text1.Text = ucle
Text2.Text = cle
Text3.Text = lclx
End Sub
Private Sub Command2_Click()
Dim i As Integer
CommonDialog1.ShowPrinter
For i = 1 To CommonDialog1.Copies
PrintForm
Next i
End Sub
Private Sub Command3_Click()
Unload Me
End Sub
Private Sub Command4_Click()
End
End Sub

```

Module

```

Global k As Single 'paletto
Global b(20) As Single 'paletto
Global e As Single 'controlx-r row
Global uclx As Single 'controlx-r ucl
Global clx As Single 'controlx-r cl
Global lclx As Single 'control x-r lcl

```

Global uclr As Single 'controlx-r ucl

Global clr As Single 'controlx-r cl

Global lclr As Single 'control x-r lcl

Global y(999) As Single 'controlx-r r

Global w(999) As Single 'controlx-r x

Global a As Single 'control p row

Global p As Single 'control p cl

Global c(999) As Single 'control p p

Global uclp(999) As Single 'control p ucl

Global lclp(999) As Single 'control p lcl

Global uclnp(999) As Single 'control np ucl

Global clnp(999) As Single 'control np cl

Global lclnp(999) As Single 'control np lcl

Global z(999) As Single 'control np np

Global d As Single 'control c row

Global f(999) As Single 'control c c

Global uclc As Single 'control c ucl

Global clc As Single 'control c cl

Global lclc As Single 'control c lcl

Global g As Single 'control u row

Global l(999) As Single 'control u u

Global uclu(999) As Single 'control u ucl

Global clu As Single 'control u cl

Global lclu(999) As Single 'control u lcl

Global h As Single 'control x-s row

Global ss(999) As Single 'control x-s s

Global uclxs As Single 'control x-s ucl

Global clxs As Single 'control x-s cl

Global lclxs As Single 'control x-s lcl

Global t(999) As Single 'control x-s x

Global uclsx As Single 'control x-s ucl

Global clsx As Single 'control x-s cl

Global lclsx As Single 'control x-s lcl

Global ee As Single 'control row

Global ucle As Single 'control ucl

Global cle As Single 'control cl

Global lcle As Single 'control lcl

Global we(999) As Single 'control x

